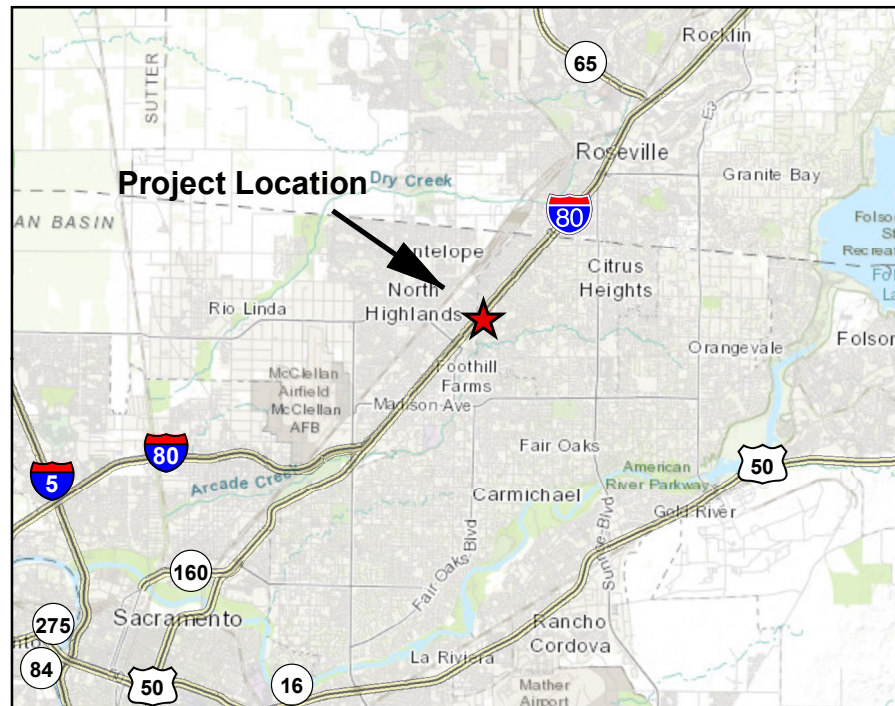


**WELL CONSTRUCTION AND TESTING  
CONTRACT PLANS FOR  
SUNRISE RECREATION AND PARK DISTRICT  
FOOTHILL GOLF COURSE IRRIGATION WATER SUPPLY WELL  
SACRAMENTO COUNTY  
MAY 2020**

**VICINITY MAP**




**SITE LOCATION**








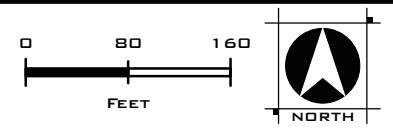
**SHEET INDEX**


- W-1 TITLE SHEET AND VICINITY MAP**
- W-2 WELL LOCATION AND SITE MAP**
- W-3 WELL DESIGN PROFILE**
- W-4 STANDARD CONSTRUCTION DETAILS - CASING**
- W-5 STANDARD CONSTRUCTION DETAILS - TESTING**

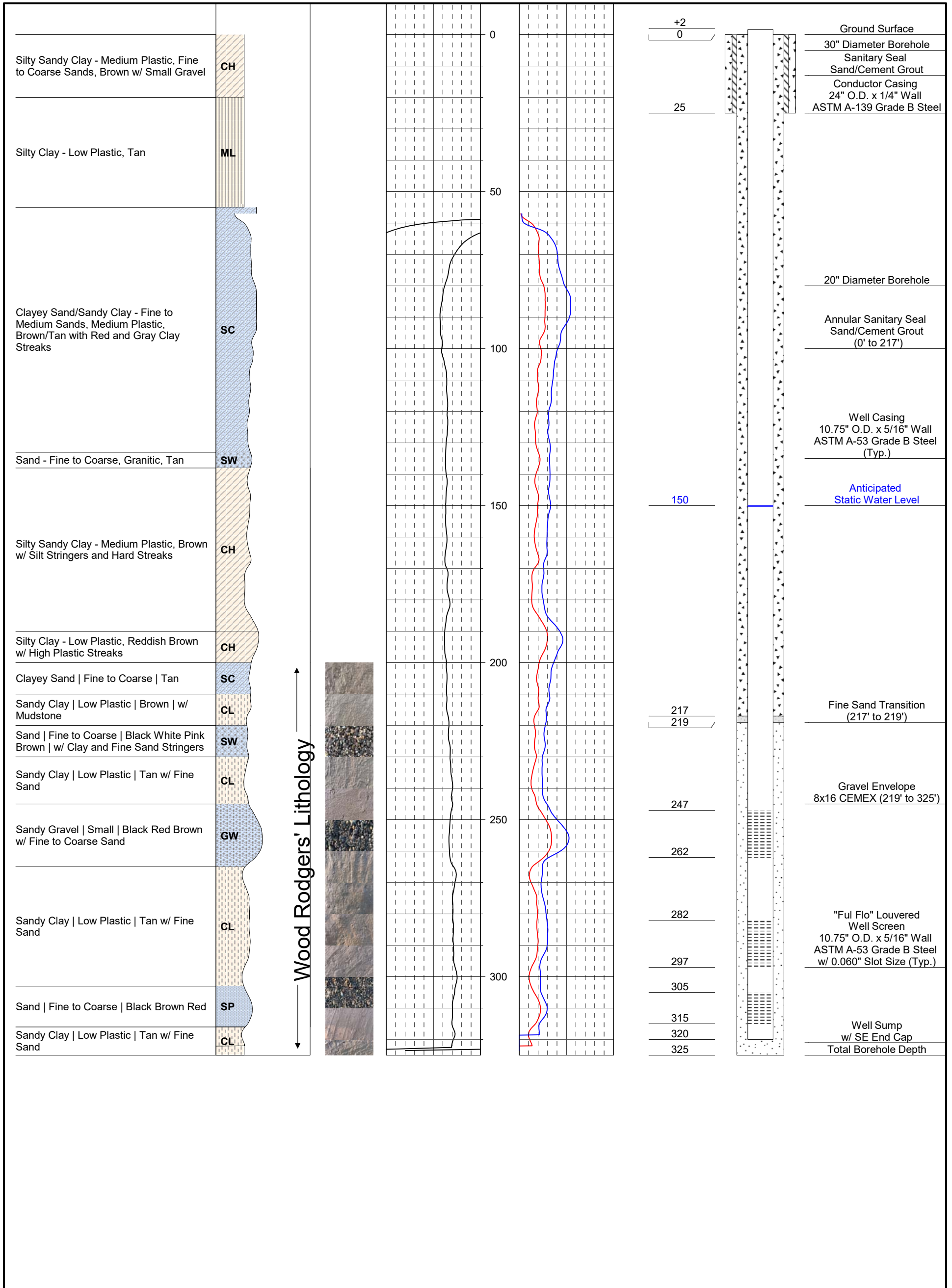
Project No. <b>8811.001</b>	<b>IMPROVEMENT PLANS FOR SUNRISE RECREATION AND PARK DISTRICT FOOTHILL GOLF COURSE IRRIGATION WATER SUPPLY WELL TITLE SHEET AND VICINITY MAP SACRAMENTO COUNTY CALIFORNIA</b>	<b>PROJECT:</b> DRILLING AND CONSTRUCTION OF IRRIGATION WELL <b>PROJECT ADDRESS:</b> 7000 VERNER AVENUE, SACRAMENTO, CA <b>OWNER:</b> SUNRISE RECREATION AND PARK DISTRICT <b>ENGINEER:</b> WOOD RODGERS, INC.	 <b>WOOD RODGERS</b> <small>DEVELOPING INNOVATIVE DESIGN SOLUTIONS</small> 3301 C Street, Bldg. 100-B Sacramento, CA 95816 Tel: 916.341.7760 Fax: 916.341.7767	Sources: Source: Esri, DigitalGlobe, GeoEye, Earthstar Geographics, CNES/Airbus DS, USDA, USGS, AeroGRID, IGN, and the GIS User Community Sources: Esri, HERE, Garmin, Intermap, increment P Corp., GEBCO, USGS, FAO, NPS, NRCAN, GeoBase, IGN, Kadaster NL, Ordnance Survey, Esri Japan, METI, Esri	
Drawing <b>W-1</b>					
SHT <b>1</b> OF <b>5</b>					



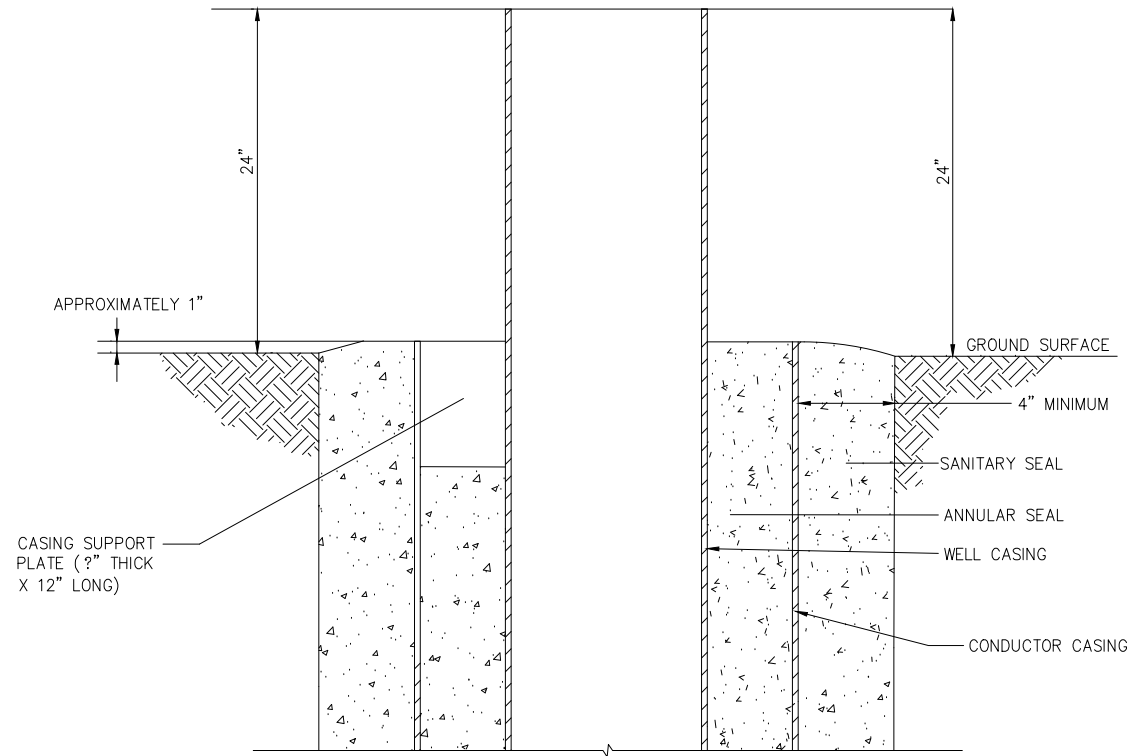
-  Well 1 (Existing)
-  Proposed Irrigation Water Supply Well
-  Storm Drain Drop Inlet
-  Septic Tank (Approximate)
-  Parcel Boundary



Project No. <b>8811.001</b>	<b>IMPROVEMENT PLANS FOR SUNRISE RECREATION AND PARK DISTRICT FOOTHILL GOLF COURSE IRRIGATION WATER SUPPLY WELL WELL SITE MAP</b>	<b>WELL LOCATION:</b> <b>WELL 79 VERNER/PANORAMA:</b> T: <u>10N</u> R: <u>06E</u> S: <u>28</u>	 <b>WOOD RODGERS</b> <small>DEVELOPING INNOVATIVE DESIGN SOLUTIONS</small> 3301 C Street, Bldg. 100-B Sacramento, CA 95816 Tel: 916.341.7760 Fax: 916.341.7767	Sources: Source: Esri, DigitalGlobe, GeoEye, Earthstar Geographics, CNES/Airbus DS, USDA, USGS, AeroGRID, IGN, and the GIS User Community
Drawing <b>W-2</b>		<b>APN: 211-0153-015</b>		
SHT <b>2</b> OF <b>5</b>		SACRAMENTO COUNTY CALIFORNIA		

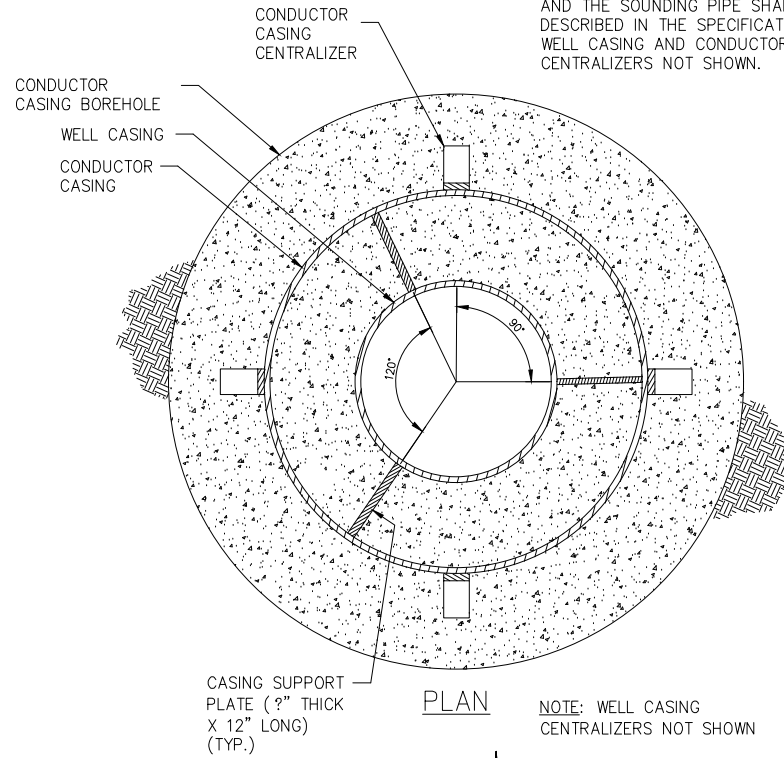


WELL CASING AND PIPES  
AT GROUND SURFACE



SECTION

NOTE: ORIENTATION OF THE GRAVEL PIPE AND THE SOUNDING PIPE SHALL BE AS DESCRIBED IN THE SPECIFICATIONS. WELL CASING AND CONDUCTOR CASING CENTRALIZERS NOT SHOWN.

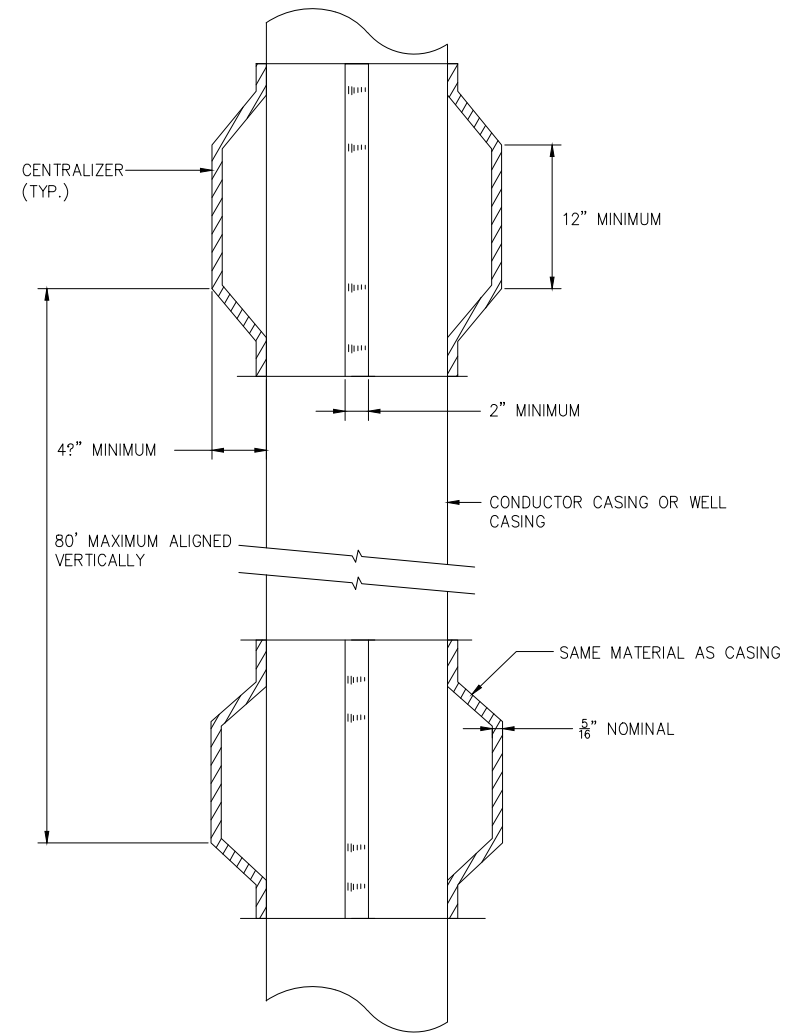


PLAN

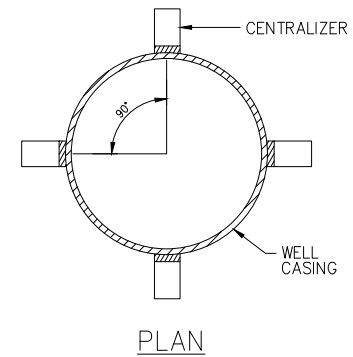
NOTE: WELL CASING CENTRALIZERS NOT SHOWN



CENTRALIZERS



SECTION

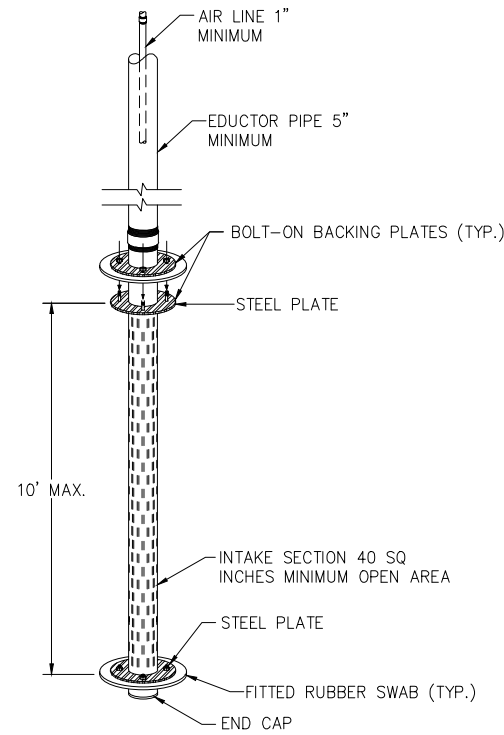


PLAN

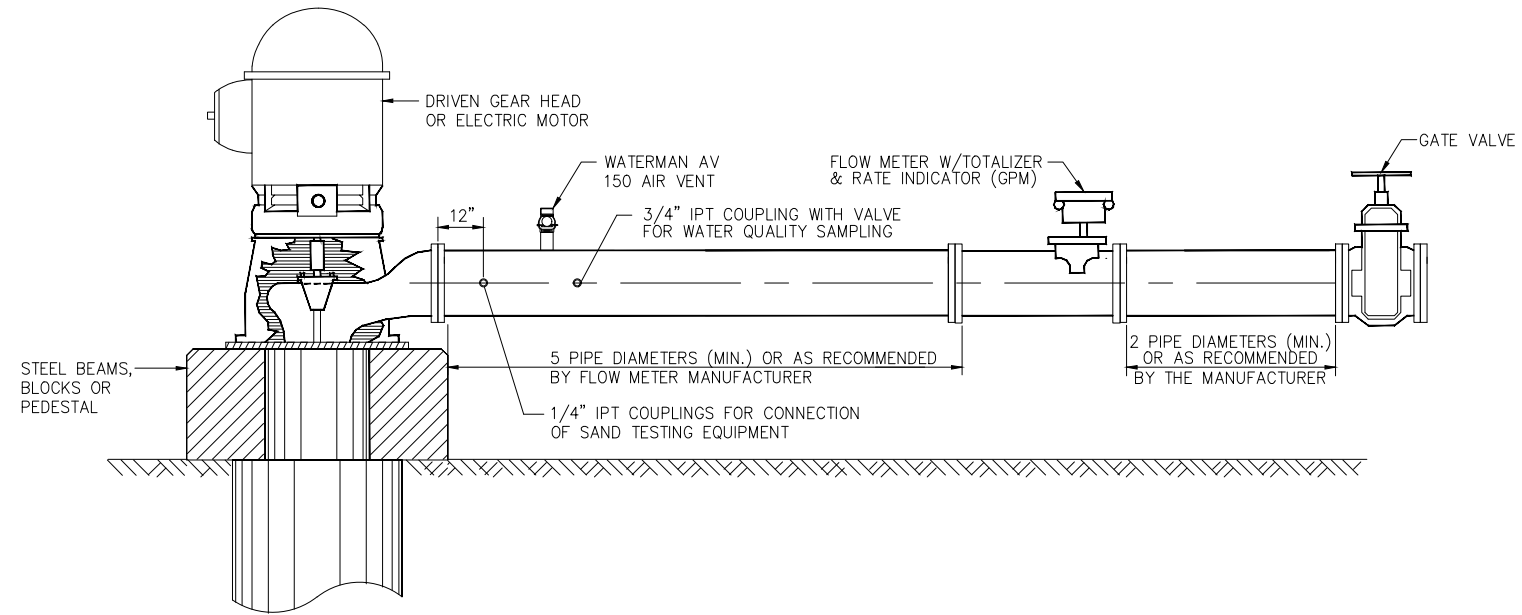
DIAL TOLL FREE  
1-800-642-2444  
AT LEAST TWO DAYS  
BEFORE YOU DIG  
UNDERGROUND SERVICE ALERT OF NORTHERN CALIFORNIA

DATE: MAY 2020	SCALE: H:N/A	V:N/A	NO.	DESCRIPTION	ENGR. INIT.	BY	DATE
<p>WOOD RODGERS DEVELOPING INNOVATIVE DESIGN SOLUTIONS 3301 C St., Bldg. 100-B Sacramento, CA 95816 Tel: 916.341.7760 Fax: 916.341.7767</p>			<p>IMPROVEMENT PLANS FOR SUNRISE RECREATION AND PARK DISTRICT FOOTHILL GOLF COURSE - IRRIGATION WATER SUPPLY WELL SACRAMENTO COUNTY CALIFORNIA</p>				
PROJECT NO. 8811.001			DRAWING W-4				
DRAWING W-4			SHT 4 OF 5				

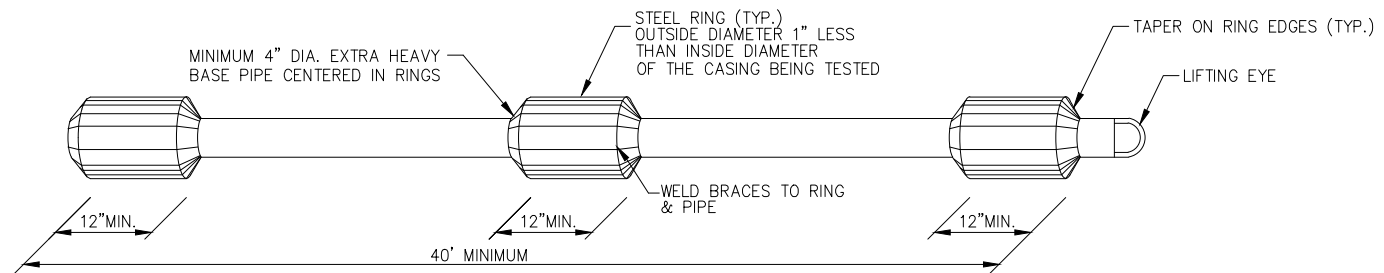
DEVELOPMENT EQUIPMENT AND  
TESTING TOOL DETAILS



DOUBLE SWAB TOOL  
NTS



TEST PUMPING DISCHARGE PLUMBING  
NTS



ALIGNMENT TESTING TOOL (DUMMY)  
NTS

DIAL TOLL FREE  
1-800-642-2444  
AT LEAST TWO DAYS  
BEFORE YOU DIG  
UNDERGROUND SERVICE ALERT OF NORTHERN CALIFORNIA

NO.	DESCRIPTION	BY	DATE

DATE: MAY 2020  
SCALE: HIN/A V/N/A  
DRAWN BY: JNT  
DESIGNED BY: S. SPAETH  
CHECKED BY: S. SPAETH

**WOOD RODGERS**  
DEVELOPING INNOVATIVE DESIGN SOLUTIONS  
3301 C. St. Bldg. 100-B Tel. 916.341.7760  
Sacramento, CA 95816 Fax 916.341.7787

IMPROVEMENT PLANS FOR  
SUNRISE RECREATION AND PARK DISTRICT  
FOOTHILL GOLF COURSE - IRRIGATION WATER SUPPLY WELL  
SACRAMENTO COUNTY CALIFORNIA

PROJECT NO.  
8811.001  
DRAWING  
W-5  
SHT 5 OF 5

\\woodrogers\loc\ProductionData\Jobs\8811.001\_Sunrise\_Parks\_and\_Res\Docs\Specifications\PlanSets\Drawings 5/15/2020 4:20 PM Jazmine Thulor